

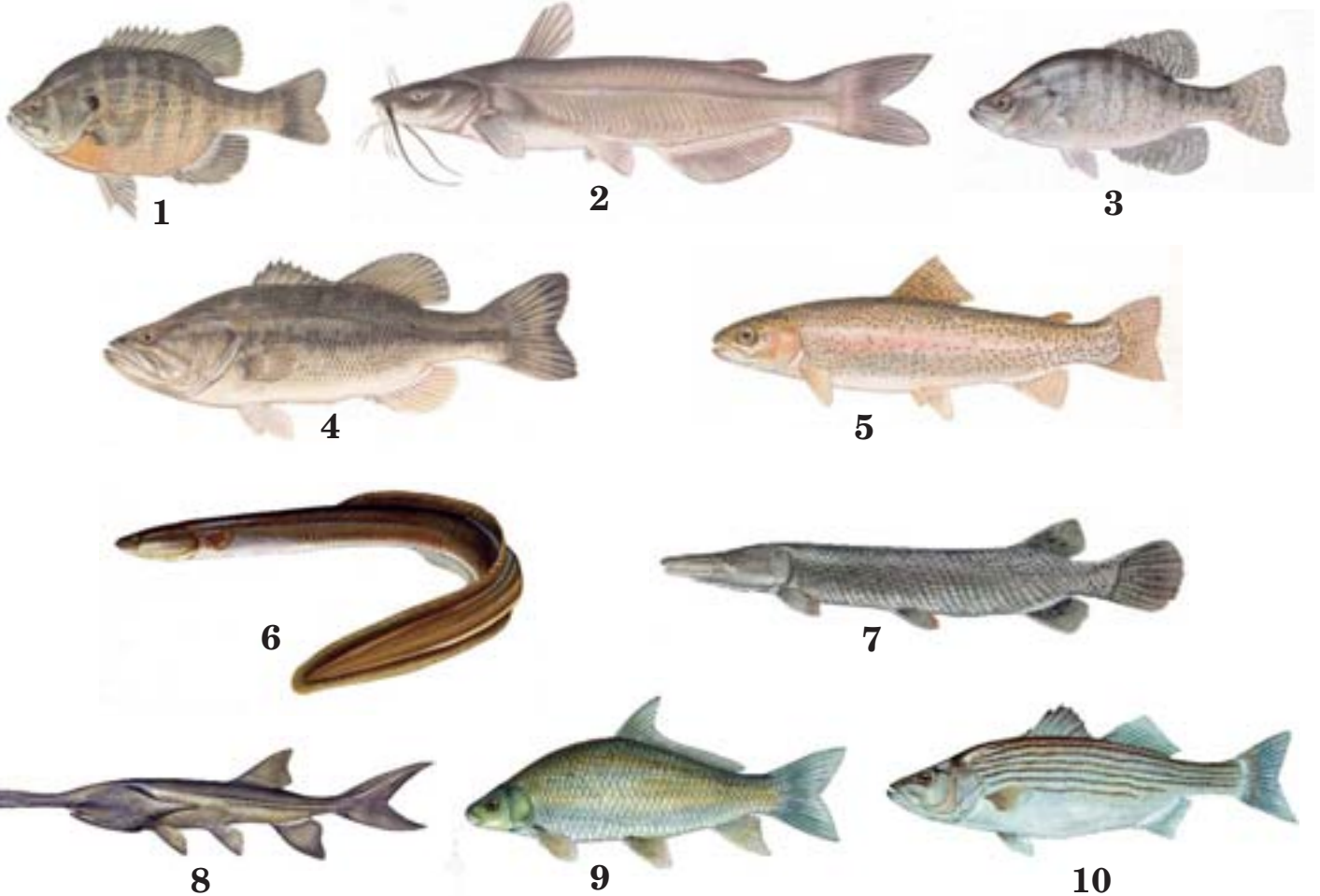
4-H Baitcasting Contest Score Sheet

Gamefish Identification

(Juniors and Seniors)

5 points/each = 50 total points (Seniors) or 25 total points (Juniors)

Fish 1: _____	(6-10 Seniors Only) Fish 6: _____
Fish 2: _____	Fish 7: _____
Fish 3: _____	Fish 8: _____
Fish 4: _____	Fish 9: _____
Fish 5: _____	Fish 10: _____



Common Fish Names

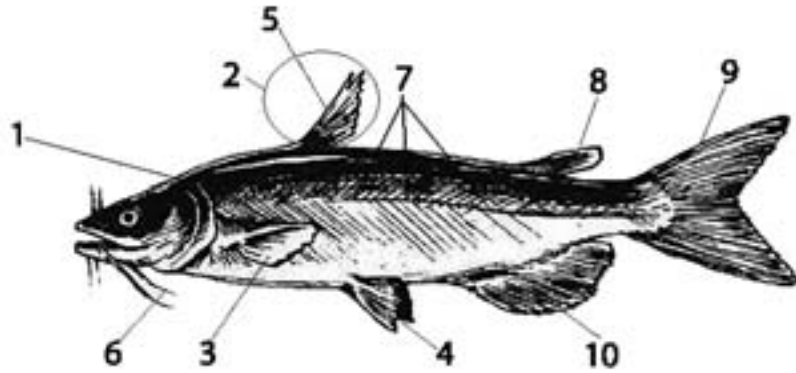
- | | | | |
|------------------------|----------------------------|---------------------|---------------------------|
| Largemouth Bass | Bream (or Bluegill) | Trout | Smallmouth Buffalo |
| Catfish | American Eel | Striped Bass | Crappie |
| Paddlefish | Alligator Gar | | |

All pictures courtesy of U.S. Fish and Wildlife Service, National Conservation Training Center – Publications and Training Materials, Creator Duane Raver.

Fish Anatomy

(Juniors and Seniors)

5 points/each = 25 total points



Your judge will pick out five numbers that point to a fish part on the fish above. Fill in the appropriate letter for the part next to those numbers.

- | | | | |
|----------|-----------|---------------------------|-----------------|
| 1) _____ | 6) _____ | A. Operculum (gill cover) | F. Lateral line |
| 2) _____ | 7) _____ | B. Dorsal fin | G. Pelvic fin |
| 3) _____ | 8) _____ | C. Barbels | H. Dorsal spine |
| 4) _____ | 9) _____ | D. Pectoral fin | I. Adipose fin |
| 5) _____ | 10) _____ | E. Caudal fin | J. Anal fin |

Fish Identification Scores

Juniors and Seniors: Fish Identification _____
 Maximum points = 5 points/fish = 25 points (juniors) or 50 points (seniors)

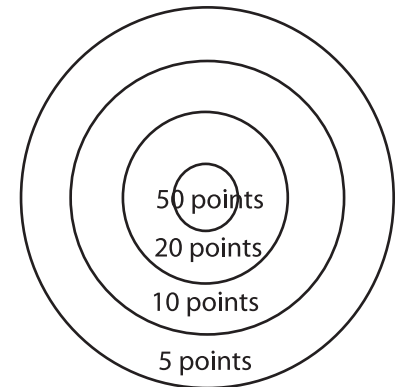
Fish Anatomy Scores

Juniors and Seniors: Fish Anatomy _____
 Maximum points = 5 points/answer = 25 points

Skill Station: Standing

Maximum points = 50 points/cast = 150 points

First cast _____
 Second cast _____
 Third cast _____
 Total Points _____



Skill Station: Sitting

Maximum points = 50 points/cast = 150 points

First cast _____
 Second cast _____
 Third cast _____
 Total Points _____

Grand Total Points

Total possible points: Juniors = 350 points
 Seniors = 375 points (county)

Name _____ Date _____ Region NE NW SE SW

Address _____ County _____ Junior or Senior